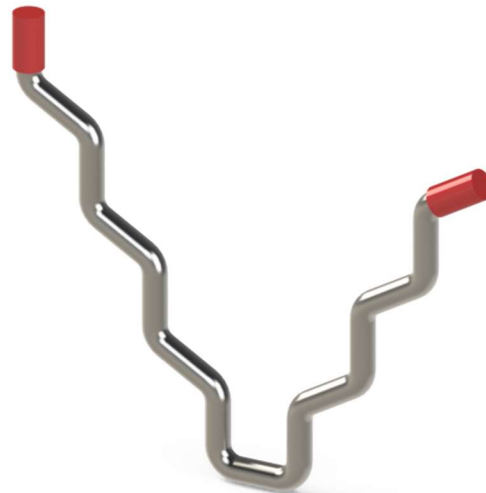




**Caps - C**

Designation : CH4.6(60)-100-310 C



**Length L1/L2 - LL**

Designation : CH2.6(60)-100/120-304 C  
unequal legs



**BENT LEGS - BL**

Designation : CH1BL.6(60)-100-253MA C  
With top of legs bent

Polyethylene or PVC caps on top of anchors avoid stress and possible cracks, scaling due to the thermal expansion of steel higher than castable thermal expansion.

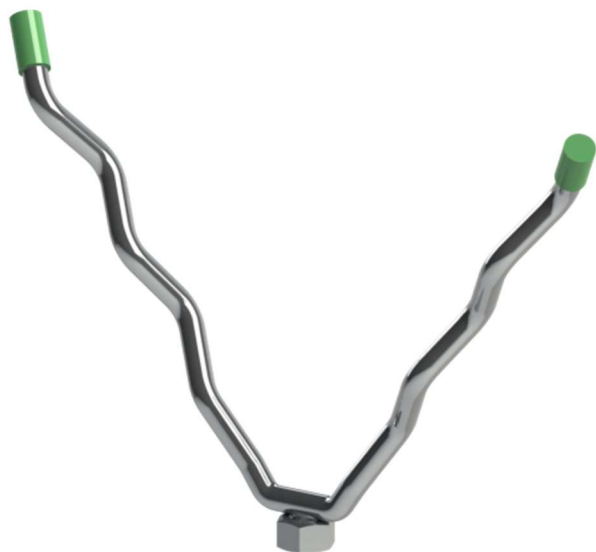
Please see page 14 for more detailed information.

[www.anchorsforrefractory.com](http://www.anchorsforrefractory.com)  
[contact@anchorsforrefractory.com](mailto:contact@anchorsforrefractory.com)



Tél : + 33 3 66 50 00 33 / +33 7 85 06 29 49  
PA Vallée de l'Escaut - rue de la crête - 59264 ONNAING-France

These informations are general informative indications. Many particular conditions of use and exceptions exist in industrial applications, many parameters can influence the technical choices. The informations mentioned in this technical data sheet, in particular regarding the features and the performances of the products, is provided for guidance purposes only and is liable to change depending of the conditions of use and environment. Information mentioned can be modified without notice. The company ANCHORS will in no circumstances be held liable for the consequences of any improper use. If you want some suggestions from us, applicable for your specific application and/or environment, please contact us.



**On standard Nut - ON**  
**On High Nut - OHN**

Designation : CH4.6(60)-100-310 C-ON-M8-310

	Standard Nut height	High Nut height
M6	5 mm	6 mm
M8	6.5 mm	8 mm
M10	8 mm	10 mm
M12	10 mm	12 mm



**On Stud - OS**

Designation : CH1.6(60)-200-304 C-OS-30-M8-304

Welded on threaded Stud

Mention thread M6, M8, M10 or M12  
 and length of stud

[www.anchorsforrefractory.com](http://www.anchorsforrefractory.com)  
[contact@anchorsforrefractory.com](mailto:contact@anchorsforrefractory.com)



Tél : + 33 3 66 50 00 33 / +33 7 85 06 29 49  
 PA Vallée de l'Escaut - rue de la crête - 59264 ONNAING-France

These informations are general informative indications. Many particular conditions of use and exceptions exist in industrial applications, many parameters can influence the technical choices. The informations mentioned in this technical data sheet, in particular regarding the features and the performances of the products, is provided for guidance purposes only and is liable to change depending of the conditions of use and environment. Information mentionned can be modified without notice. The company ANCHORS will in no circumstances be held liable for the consequences of any improper use. If you want some suggestions from us, applicable for your specific application and/or environment, please contact us.



## On Boss - OB

Designation : CH2.6(60)-100-253MA C-OB-M8-310

Welded on boss

M6 : Ø 10 EXT. HEIGHT 15 MM

M8 : Ø 12 EXT. HEIGHT 15 MM

M10: Ø 14 EXT. HEIGHT 15 MM

M12: Ø 16 EXT. HEIGHT 15 MM



The boss and its female thread are longer than a nut or even a high nut. That makes the connexion stronger, more secure.

[www.anchorsforrefractory.com](http://www.anchorsforrefractory.com)  
[contact@anchorsforrefractory.com](mailto:contact@anchorsforrefractory.com)



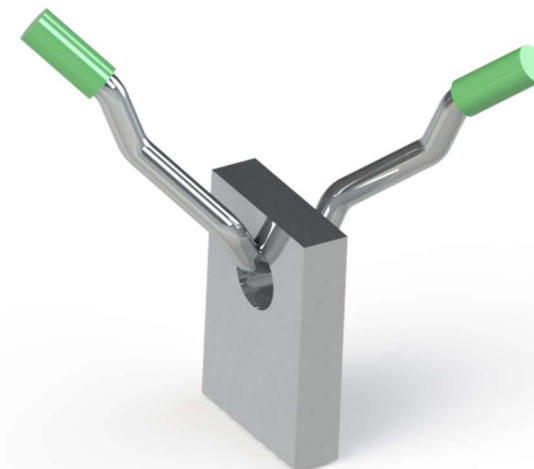
Tél : + 33 3 66 50 00 33 / +33 7 85 06 29 49  
 PA Vallée de l'Escaut - rue de la crête - 59264 ONNAING-France

These informations are general informative indications. Many particular conditions of use and exceptions exist in industrial applications, many parameters can influence the technical choices. The informations mentioned in this technical data sheet, in particular regarding the features and the performances of the products, is provided for guidance purposes only and is liable to change depending of the conditions of use and environment. Information mentionned can be modified without notice. The company ANCHORS will in no circumstances be held liable for the consequences of any improper use. If you want some suggestions from us, applicable for your specific application and/or environment, please contact us.



### IN WB

Designation : **IN.WB.8 - R12/25 – 253MA**  
 Also called FLOATING ANCHOR



### IN BSP

Designation : **IN.BSP.040.030.8(10) - 310**  
 Also called FLOATING ANCHOR

[www.anchorsforrefractory.com](http://www.anchorsforrefractory.com)  
[contact@anchorsforrefractory.com](mailto:contact@anchorsforrefractory.com)



Tél : + 33 3 66 50 00 33 / +33 7 85 06 29 49  
 PA Vallée de l'Escaut - rue de la crête - 59264 ONNAING-France

These informations are general informative indications. Many particular conditions of use and exceptions exist in industrial applications, many parameters can influence the technical choices. The informations mentioned in this technical data sheet, in particular regarding the features and the performances of the products, is provided for guidance purposes only and is liable to change depending of the conditions of use and environment. Information mentioned can be modified without notice. The company ANCHORS will in no circumstances be held liable for the consequences of any improper use. If you want some suggestions from us, applicable for your specific application and/or environment, please contact us.